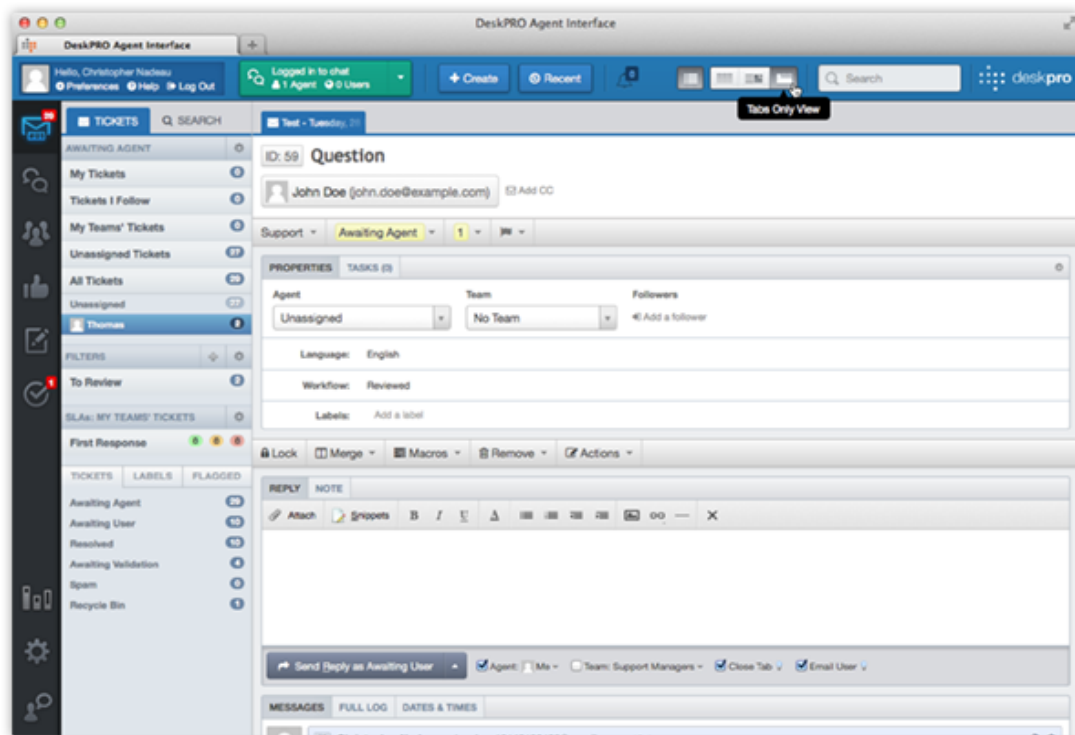


## Updated agent interface

2013-06-11 - Christopher Nadeau - Comments (0) - Product

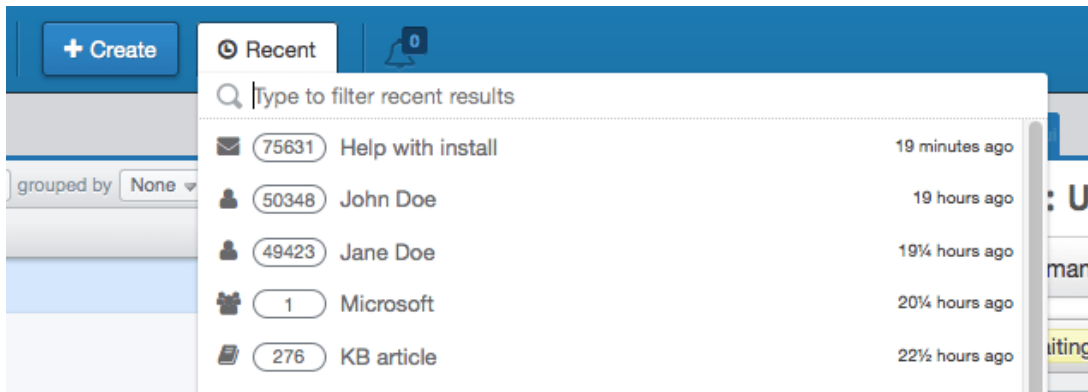
The Agent Interface has been updated with a new header bar and improved navigation.



In the header the new View Mode buttons let you toggle the visibility of the three panes. Users on smaller screens can now work comfortably by hiding panes that they are not using.



The new Recent menu makes it easy to find tabs you have viewed recently and also search through them.



Tickets, CRM, Publish and Feedback now have new "Search" tabs to make it easier to submit specific searches.

